

# DEVELON

## Compact Equipment Attachments

MINI EXCAVATOR / COMPACT TRACK LOADER



# DEVELON

## Continuous evolution, for better.

---

We trace our roots to 1937 as one of Korea's first large-scale machine plants. During that time, we have consistently delivered earth-moving equipment to build critical infrastructure for the betterment of communities, societies and the wider world.

We are  
**DEVELON.**

DEVELON is a bold name that reflects our core ambition to continue developing onward and leaving behind a positive footprint in our world. Moving forward, we will continue providing innovative products and solutions that advance the world we live in today.



# Your Local Dealer Is Dedicated to Your Success.

Your local DEVELON dealer is here to provide a full lineup of highly productive and fuel-efficient equipment, outstanding value and comprehensive services to help build your success.

## Expanding Equipment Lineup

DEVELON continues to expand our innovative and durable lineup of equipment. Talk with your dealer to find the right equipment, attachments and technologies to move ahead.

## Authorized DEVELON Service Technicians

You can count on experienced and highly skilled professional technicians to keep your DEVELON equipment running at peak performance.

## Parts Availability

Your dealer can offer more parts inventory and faster delivery – thanks to our two warehouses in Georgia and Washington.

## Machine Assembly Facility

A dedicated facility tailors the equipment configuration and final machine assembly for faster delivery to your dealership.



# Do More With DEVELON Attachments.

Push. Lift. Grab. Dig. With our large selection of DEVELON-designed attachments, we'll help you tackle more tasks around your job site. Built for durability and ease of operation, DEVELON attachments are proven to help you keep projects on schedule and on budget.



## Excavation and Boring

- Auger
- Heavy-Duty Bucket
- Low-Profile Dirt Bucket
- Utility Bucket
- Multi-Purpose Bucket

## Snow

- Snow Blower
- Snow/Light-Material Bucket
- Snow Pusher

## Grading and Leveling

- Ditch-Cleaning Bucket
- Power Rake

## Sweeping and Clearing

- Angle Broom
- Rotary Brush Cutter

## Hauling and Handling

- Hi-Vis Rail Pallet Fork
- Large-Capacity Root Grapple
- Scrap Grapple
- Skeleton Grapple
- Utility Bucket

## General

- Hydraulic Quick Coupler
- Thumb
- Manual Quick Hitch

# Compact Track Loader Attachments

- Angle Broom > Power Rake > Auger > Hi-Vis Rail Pallet Fork
- > Scrap Grapple > Skeleton Grapple > Large-Capacity Root Grapple
- > Low-Profile Dirt Bucket > Utility Bucket > Multi-Purpose Bucket
- > Rotary Brush Cutter > Snow Blower
- > Snow Pusher > Snow/Light-Material Bucket

## Angle Broom

The angle broom is a valuable attachment for sweeping and clearing debris, gravel, sand and waste from your construction site. It can also be used for post-construction cleanup when preparing sites for landscaping or further development.

### Features:

- The DEVELON angle broom features a standard hydraulic angle and electrical wiring with plug for seamless operation.
- Attachment is powered by a guarded and recessed Direct Drive Eaton® motor and an exclusive self-centering swing linkage system, ensuring optimal sweeping performance.
- Easily replaceable poly/wire wafers.
- Stands flip down to protect bristles making storage and maintenance a breeze.



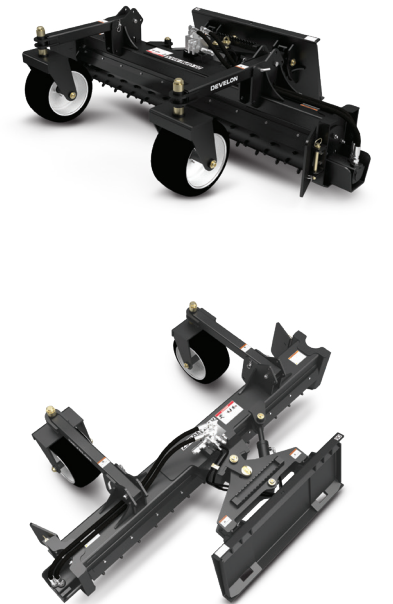
Part Number	Description
AB35VG-84	84" ANGLE BROOM W/ HYD ANGLE & ELECTRICAL PLUG
AB35VG-96	96" ANGLE BROOM W/ HYD ANGLE & ELECTRICAL PLUG

## Power Rake

Power rake attachments are highly effective for grading and leveling uneven terrain like lawns, driveways and construction sites. By breaking up compacted soil, removing rocks and debris, and redistributing material evenly, the DEVELON power rake creates a smooth and uniform surface ideal for laying sod, seeding or paving.

### Features:

- Comes with a standard hydraulic angle feature (25 degrees to the left and right). Easily grade soil, prepare seedbeds and remove debris with bi-directional operation and angle that is adjustable from inside the cab.
- Offers superior torque and reduced maintenance compared to chain drive rakes.
- Features a guarded motor, carbide tip teeth and flat-free urethane filled tires for hassle-free maintenance.



Part Number	Description
PR35VG-72	72" POWER RAKE W/ HYD ANGLE & ELECTRICAL PLUG
PR35VG-90	90" POWER RAKE W/ HYD ANGLE & ELECTRICAL PLUG



## Auger



Auger attachments play a crucial role in utility and infrastructure projects. The DEVELON auger efficiently bores holes to your desired depth and diameter. This attachment enhances productivity and precision during utility installation, reducing the need for manual labor or additional excavation equipment.

### Features:

- Customers can choose from a range of bits, 6" to 36", including a standard or rock auger bit with various extensions.
- Hoses are routed from the top to allow deeper drilling, while planetary reduction and a direct drive motor with relief valve protection ensure longevity and consistent torque.



Part Number	Description
AG35VG	AUGER DRIVE – 2" HEX 15-25 GPM
AG35VG-ADAPT	ADAPTER – 2" HEX FEMALE TO 2.916" (OD) ROUND MALE OUTPUT
AG35VG-FEXT24	24" FIXED EXTENSION – 2" HEX
AG35VG-VEXT48	48" VARIABLE EXTENSION – 2" HEX
AG35VG-BIT6	6" AUGER BIT – 2" HEX – 4' LENGTH
AG35VG-BIT9	9" AUGER BIT – 2" HEX – 4' LENGTH
AG35VG-BIT12	12" AUGER BIT – 2" HEX – 4' LENGTH
AG35VG-BIT15	15" AUGER BIT – 2" HEX – 4' LENGTH
AG35VG-BIT18	18" AUGER BIT – 2" HEX – 4' LENGTH
AG35VG-BIT24	24" AUGER BIT – 2" HEX – 4' LENGTH
AG35VG-BIT30	30" AUGER BIT – 2" HEX – 4' LENGTH
AG35VG-BIT36	36" AUGER BIT – 2" HEX – 4' LENGTH
AG35VG-RBIT6	6" ROCK AUGER BIT – 2" HEX – 4' LENGTH
AG35VG-RBIT9	9" ROCK AUGER BIT – 2" HEX – 4' LENGTH
AG35VG-RBIT12	12" ROCK AUGER BIT – 2" HEX – 4' LENGTH
AG35VG-RBIT16	16" ROCK AUGER BIT – 2" HEX – 4' LENGTH
AG35VG-RBIT18	18" ROCK AUGER BIT – 2" HEX – 4' LENGTH

## Hi-Vis Rail Pallet Fork

A rail pallet fork plays a crucial role in transporting and positioning rails, sleepers, ballast and ties. The DEVELON hi-vis rail pallet fork enables operators to maneuver heavy and bulky materials with ease, optimizing productivity.

### Features:

- With a sturdy 3/4" beveled rail and impressive 5,500-lb. capacity, it delivers reliable load handling.
- The brickguard, which is flush with the tines, stabilizes loads effectively, while centered bracing on the quick attach plate facilitates easy hookup.
- The bolt-on step comes standard. It is removable and can be installed on either side of the carriage. Easily switch to a walk-through brickguard by removing the center section. The 1/4" brickguard design offers high visibility.



Part Number	Description
PFHV35VG-48	RAIL PALLET FORKS - HI-VIS 1 1/2" x 48" (CAPACITY: 5500 LB.)

## Scrap Grapple

The scrap grapple attachment is an essential tool for handling demolition debris and construction waste on job sites. Designed to efficiently pick up and remove materials like concrete rubble, bricks and wood, the DEVELON scrap grapple streamlines cleanup efforts and enhances site safety.

### Features:

- With a durable solid-bottom and 2-cylinder independent grapple, it excels at scooping and hauling bulky debris.
- It's built for durability and performance, with an extra brace plate and 1/2" vertical braces inside the bucket for added strength, along with NITROSTEEL® cylinder rods and TEFLON® coated bushings on all pivots.
- Standard cylinder guards help support safe operation.



Part Number	Description
SG35VG-78C	78" SCRAP GRAPPLE W/ BOE
SG35VG-84C	84" SCRAP GRAPPLE W/ BOE
SG35VG-90C	90" SCRAP GRAPPLE W/ BOE

## Skeleton Grapple

The versatile skeleton grapple attachment is built for hauling brush, logs and debris. Its open sides, bottom and back facilitate efficient hauling.

### Features:

- Designed with maximum rigidity in mind, each tine is forged from a single piece of steel.
- Attachment comes standard with cylinder guards, NITROSTEEL® cylinder rods and TEFLON® coated bushings for enduring performance.

Part Number	Description
SK35VG-78	78" SKELETON GRAPPLE
SK35VG-84	84" SKELETON GRAPPLE
SK35VG-90	90" SKELETON GRAPPLE



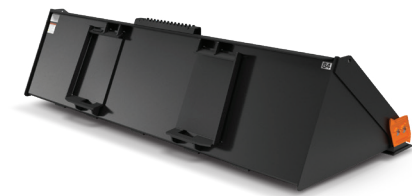
## Low-Profile Dirt Bucket

The low-profile dirt bucket attachment is engineered for precision excavation, landscaping, utility installation and grading. It's perfect for digging trenches, leveling terrain and shaping surfaces with accuracy.

### Features:

- Customers can choose between bolt-on edge or teeth options, with a cutting edge visible from the cab for enhanced control.
- Additional features include a grading bend for optimal reverse grading, 1/4" thick shell and side plates, added gusseting on the back of the bucket for durability and 1/2 x 4" wear bars for protecting the bucket bottom.
- Optional side cutters have an exclusive reversible design that improves performance in hard soils and extends the life of the bucket's sides.

Part Number	Description
LP35VG-78C	78" LOW-PROFILE DIRT BUCKET W/ BOE
LP35VG-78CS	78" LOW-PROFILE DIRT BUCKET W/ BOE & SIDE CUTTERS
LP35VG-84C	84" LOW-PROFILE DIRT BUCKET W/ BOE
LP35VG-84CS	84" LOW-PROFILE DIRT BUCKET W/ BOE & SIDE CUTTERS
LP35VG-90C	90" LOW-PROFILE DIRT BUCKET W/ BOE
LP35VG-90CS	90" LOW-PROFILE DIRT BUCKET W/ BOE & SIDE CUTTERS
LP35VG-78T	78" LOW-PROFILE DIRT BUCKET W/ TEETH
LP35VG-78TS	78" LOW-PROFILE DIRT BUCKET W/ TEETH & SIDE CUTTERS
LP35VG-84T	84" LOW-PROFILE DIRT BUCKET W/ TEETH
LP35VG-84TS	84" LOW-PROFILE DIRT BUCKET W/ TEETH & SIDE CUTTERS
LP35VG-90T	90" LOW-PROFILE DIRT BUCKET W/ TEETH
LP35VG-90TS	90" LOW-PROFILE DIRT BUCKET W/ TEETH & SIDE CUTTERS



## Large-Capacity Root Grapple

The DEVELON large-capacity root grapple attachment delivers versatility for construction and demolition projects and other tasks. It streamlines cleanup and sorting efforts and reduces manual labor with efficient material handling features.

### Features:

- Each tine tip is fully gusseted for enhanced strength.
- Cylinder guards come standard to deliver durability and reliability in demanding work environments.

Part Number	Description
RR35VG-84	84" LARGE-CAPACITY ROOT RAKE GRAPPLE



## Utility Bucket

The DEVELON utility bucket attachment is robustly designed for handling dense and bulk materials with ease.



### Features:

- Bolt-on edges are durable and easy to replace. Heavy-duty bracing ties from top to quick-attach plate ensure stability.
- With an extra brace plate inside for added strength, and 1/2" x 4" wear bars protecting the bucket bottom, this utility bucket is built to last.



Part Number	Description
UT35VG-78C	78" UTILITY BUCKET W/ BOE
UT35VG-84C	84" UTILITY BUCKET W/ BOE
UT35VG-90C	90" UTILITY BUCKET W/ BOE

## Multi-Purpose Bucket

The DEVELON multi-purpose bucket attachment is the ultimate 4-in-1 tool for light excavation and backfilling tasks. Designed for versatility, it excels at digging shallow trenches, removing soil and effortlessly backfilling excavated areas. Ideal for utility installation, landscaping and minor excavation projects, the multi-purpose bucket reduces the need for manual labor and larger equipment.



### Features:

- Choose either bolt-on edges or teeth for added functionality.
- With heavy-duty construction, it's perfect for dozing, clamping, leveling and bottom dumping.
- Bucket features cylinder guards, NITROSTEEL® cylinder rods, TEFLON® coated bushings and 5/8" x 6" reversible steel bolt-on edges.
- The standard side cutters have an exclusive reversible design to improve performance in hard soils and extend the life of the bucket's sides.



Part Number	Description
MP35VG-78CS	78" MULTI-PURPOSE BUCKET W/ BOE & SIDE CUTTERS
MP35VG-78TS	78" MULTI-PURPOSE BUCKET W/ TEETH & SIDE CUTTERS
MP35VG-84CS	84" MULTI-PURPOSE BUCKET W/ BOE & SIDE CUTTERS
MP35VG-84TS	84" MULTI-PURPOSE BUCKET W/ TEETH & SIDE CUTTERS

## Rotary Brush Cutter

(Open-Front, HD Open-Front and Closed-Front)

The DEVELON rotary brush cutter attachment is tailored to meet diverse vegetation management needs, helping to safely and efficiently trim vegetation near critical infrastructure. Three models are designed to ensure reliable operations for utility companies, transportation agencies and maintenance crews.



### Open-Front

- Open-front models are ideal for utility and right-of-way maintenance: adept at clearing vegetation around power lines, pipelines and transportation corridors.
- The open-front model issues a 6" cut capacity and balances speed and precision using a rounded flywheel with 3 double-sided blades that bounce off stumps for a maintained finish.
- Featuring a Direct Drive Eaton® motor with relief valves, hydraulic braking within 10 seconds, motor and spindle guarding, and replaceable skid shoes, this brush cutter excels in reliability and performance.

### HD Open-Front

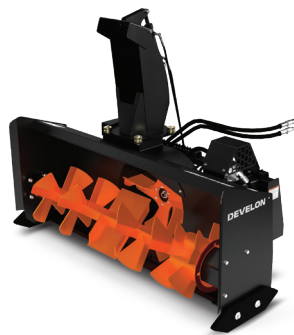
- If you need to prioritize the swift cutting of brush and trees, the HD open-front option offers exceptional capability, with an 8" cut capacity.
- Equipped with a standard pressure gauge, four double-sided blades with carbide teeth, a heavier flywheel and industrial-grade components, it handles the most demanding jobs with ease.
- The Direct Drive Eaton motor with relief valves delivers power efficiently, while hydraulic braking stops the flywheel within 10 seconds for added safety.
- With replaceable front skid shoes, bolt-on bottom deck runners, and standard features like motor and spindle guards, it's built for durability and performance.

### Closed-Front

- The closed-front model, with a 4" cut capacity, ensures a consistent finished look by efficiently clearing grass and brush.
- Leaves, limbs, and saplings are transformed into small chips and pieces, ensuring a uniform, polished appearance.
- Its circular flywheel with three updraft blades bounces off stumps.
- Chain curtain effectively contains flying debris within the deck, facilitating highly efficient mulching and adding safety.
- Replaceable front skid shoes provide durability and easy maintenance.

Part Number	Description
BC35VG-720SF	72" OPEN FRONT BRUSH CUTTER 18-25 GPM
BC35VG-720HF	72" OPEN FRONT BRUSH CUTTER 33-42 GPM
BC35VG-780SF	78" OPEN FRONT BRUSH CUTTER 18-25 GPM
BC35VG-780HF	78" OPEN FRONT BRUSH CUTTER 33-42 GPM
BC35VG-840SF	84" OPEN FRONT BRUSH CUTTER 18-25 GPM
BC35VG-840HF	84" OPEN FRONT BRUSH CUTTER 33-42 GPM
HDBC35VG-780SF	78" HD OPEN FRONT BRUSH CUTTER 20-25 GPM W/ PRESSURE GAUGE & CARBIDE TEETH
HDBC35VG-780HF	78" HD OPEN FRONT BRUSH CUTTER 39-45 GPM W/ PRESSURE GAUGE & CARBIDE TEETH
HDBC35VG-840SF	84" HD OPEN FRONT BRUSH CUTTER 20-25 GPM W/ PRESSURE GAUGE & CARBIDE TEETH
HDBC35VG-840HF	84" HD OPEN FRONT BRUSH CUTTER 39-45 GPM W/ PRESSURE GAUGE & CARBIDE TEETH
BC35VG-72CSF	72" CLOSED FRONT ROTARY BRUSH CUTTER 18-25 GPM
BC35VG-72CHF	72" CLOSED FRONT ROTARY BRUSH CUTTER 33-42 GPM
BC35VG-78CSF	78" CLOSED FRONT ROTARY BRUSH CUTTER 18-25 GPM
BC35VG-78CHF	78" CLOSED FRONT ROTARY BRUSH CUTTER 33-42 GPM





## Snow Blower

(Standard and Heavy-Duty)

With two options to choose from, DEVELON snow blower attachments are designed to tackle snow removal in tight or confined spaces with ease. The standard option features a paddle-style auger that chews through any type of snow, throwing it up to 30 feet with direct drive Parker® motors. For heavier-duty applications, our HD snow blower can throw snow up to 40 feet. Equipped with angled auger paddles and a direct drive Eaton® motor, it removes snow efficiently even in challenging conditions.

### Features:

- A 3/16" fan housing reduces distortion and protects valves and electrical components.
- Adjustable and reversible poly skid shoes are designed to hop over small obstructions.
- 270° hydraulic chute rotation with in-cab deflector controls let operators clear snow effectively and efficiently.



Part Number	Description
SB35VG-72SF	72" SNOW BLOWER 16-25 GPM W/ ELECTRICAL PLUG
SB35VG-84SF	84" SNOW BLOWER 16-25 GPM W/ ELECTRICAL PLUG
HDSB35VG-72SF	72" HD SNOW BLOWER 18-25 GPM W/ ELECTRICAL PLUG
HDSB35VG-72HF	72" HD SNOW BLOWER 33-42 GPM W/ ELECTRICAL PLUG
HDSB35VG-84SF	84" HD SNOW BLOWER 18-25 GPM W/ ELECTRICAL PLUG
HDSB35VG-84HF	84" HD SNOW BLOWER 33-42 GPM W/ ELECTRICAL PLUG

## Snow/Light-Material Bucket

(Standard and Heavy-Duty)

The DEVELON snow and light-material bucket attachments are engineered for efficient snow removal and versatile material handling tasks. Wide designs streamline efficient snow collection and removal on parking lots, driveways and roads. With its durable construction and operator-friendly features, the attachment is perfect for hauling high volumes of snow, mulch and light materials.

### Features:

- The standard option features 3/8" vertical braces inside the bucket, 3/16" shell, 3/8" side edges and gussets, and 1/4" side plates.
- For heavy-duty applications in demanding environments, our HD version offers increased capacity and strength with an extra brace plate, 1/4" thick shell and side plates, and 1/2" vertical braces inside the bucket.
- Both options feature windows for better operator visibility, promoting a safer operating environment.



Part Number	Description
SL35VG-78C	78" SNOW/LIGHT MATERIAL BUCKET W/ BOE
SL35VG-84C	84" SNOW/LIGHT MATERIAL BUCKET W/ BOE
SL35VG-96C	96" SNOW/LIGHT MATERIAL BUCKET W/ BOE
SL35VG-101C	101" SNOW/LIGHT MATERIAL BUCKET W/ BOE
HDSL35VG-78C	78" HD SNOW/LIGHT MATERIAL BUCKET W/ BOE
HDSL35VG-84C	84" HD SNOW/LIGHT MATERIAL BUCKET W/ BOE
HDSL35VG-96C	96" HD SNOW/LIGHT MATERIAL BUCKET W/ BOE
HDSL35VG-101C	101" HD SNOW/LIGHT MATERIAL BUCKET W/ BOE

## Snow Pusher

The DEVELON snow pusher attachment is engineered for efficient snow clearing on roads, streets and highways, particularly in residential and urban areas.

### Features:

- Its rubber edge is perfect for clearing and piling fresh snow, slush and light materials, ensuring thorough cleanup.
- With a free-floating design, it automatically adapts to uneven ground in all directions, while the reversible, self-leveling skid shoes with tapered outside edges protect from side impacts.
- Designed to keep pusher weight on the edge automatically for consistent cleanup and minimal maintenance, it ensures safe passage of vehicles and emergency access during winter weather events.



Part Number	Description
SP35VG-84	84" SNOW PUSHER
SP35VG-96	96" SNOW PUSHER
SP35VG-108	108" SNOW PUSHER
SP35VG-120	120" SNOW PUSHER



# Mini Excavator Attachments

Heavy-Duty Bucket > Ditch-Cleaning Bucket > Thumb  
> Hydraulic Quick Coupler > Manual Quick Hitch



## Heavy-Duty Bucket

Meet your digging demands with a DEVELON heavy-duty bucket.

- Features high-quality, abrasion-resistant material for enhanced durability.

- Standard with an extra set of pins to pair with our hydraulic quick coupler.
- Optimized for angle filling and dumping.



## Ditch Cleaning Bucket

Match your grading and backfill demands with ditch cleaning buckets.

- Features high-quality, abrasion-resistant material for enhanced durability.

- Utilizes a flat bottom to level ground.
- Optimized for angle filling and dumping.



## Thumb

DEVELON's mini excavators come with a standard thumb mount built into their arms, eliminating the need for welding to attach a thumb.

- Installation on the arm is quick and easy.
- Serrated edge holds material secure to bucket for superior loading and material handling.

- High quality steel provides strength, durability and abrasion resistance.
- Choose from two profiled narrow, two straight or four tine options to perfectly mesh with our digging buckets.



## Hydraulic Quick Coupler

Quick couplers increase your machine's versatility and improve your productivity when your work includes switching attachments.

- Built with extra-high-strength (EHS) and abrasion-resistant (AR) steels for maximum durability.

- Electrical circuit design features a two-stage release for increased safety.
- Operator control panel requires no modifications to cab interior.
- Hook up to pin-on attachments with ease from inside the cab.



## Manual Quick Hitch

Easily interfaced and connected with a wide variety of attachments with one simple, single-pin retention system.

- Built with high-strength steel for maximum durability.
- Low profile keeps breakout force loss to a minimum.

- Choose between a wide range of heavy-duty and ditch cleaning bucket sizes in the manual quick-hitch style.



# DX17Z-7

Part Number	Description	Tip Radius	Width	Height	Length	Capacity	Number of Teeth	Empty Weight
<b>Quick Hitch - Manual</b>								
QH01HB	QUICK HITCH QUICK COUPLER; MANUAL		8-11/16"	11-3/8"	16-9/16"			70 lb.
DC01GB-24QH	24" QUICK HITCH - DITCH CLEANING BUCKET	19"	25"	14-1/4"	20"	0.07 yd <sup>3</sup>		125 lb.
DC01GB-30QH	30" QUICK HITCH - DITCH CLEANING BUCKET	19"	31"	14-1/4"	20"	0.09 yd <sup>3</sup>		155 lb.
DC01GB-36QH	36" QUICK HITCH - DITCH CLEANING BUCKET	19"	37"	14-1/4"	20"	0.11 yd <sup>3</sup>		180 lb.
HD01GB-12QH	12" QUICK HITCH - HD BUCKET	22"	12"	15-3/8"	24"	0.04 yd <sup>3</sup>	3	90 lb.
HD01GB-16QH	16" QUICK HITCH - HD BUCKET	22"	16"	15-3/8"	24"	0.05 yd <sup>3</sup>	4	120 lb.
HD01GB-18QH	18" QUICK HITCH - HD BUCKET	22"	18"	15-3/8"	24"	0.06 yd <sup>3</sup>	4	135 lb.
HD01GB-20QH	20" QUICK HITCH - HD BUCKET	22"	20"	15-3/8"	24"	0.07 yd <sup>3</sup>	4	150 lb.
HD01GB-24QH	24" QUICK HITCH - HD BUCKET	22"	24"	15-3/8"	24"	0.08 yd <sup>3</sup>	5	180 lb.
HT01GB2T-QH	MAIN PIN THUMB (QH COUPLER REQUIRED ) 2 TINES		14-1/4"	7-5/16"	22"		2 tines	95 lb.

<b>Direct Pin-On or W/ Pin Grabber Quick Coupler</b>								
DC01GB-24	24" DITCH CLEANING BUCKET	PO: 18-1/8"	25"	17-3/16"	19"	0.08 yd <sup>3</sup>		134 lb.
DC01GB-30	30" DITCH CLEANING BUCKET	PO: 18-1/8"	31"	17-3/16"	19"	0.10 yd <sup>3</sup>		158 lb.
DC01GB-36	36" PIN-ON - DITCH CLEANING BUCKET	PO: 18-1/8"	37"	17-3/16"	19"	0.12 yd <sup>3</sup>		182 lb.
HD01GB-12	12" PIN-ON - HD BUCKET	PO: 20-7/8"	12"	17-1/8"	24-9/16"	0.04 yd <sup>3</sup>	3	95 lb.
HD01GB-16	16" PIN-ON - HD BUCKET	PO: 20-7/8"	16"	17-1/8"	24-9/16"	0.05 yd <sup>3</sup>	4	114 lb.
HD01GB-18	18" PIN-ON - HD BUCKET	PO: 20-7/8"	18"	17-1/8"	24-9/16"	0.06 yd <sup>3</sup>	4	139 lb.
HD01GB-20	20" PIN-ON - HD BUCKET	PO: 20-7/8"	20"	17-1/8"	24-9/16"	0.07 yd <sup>3</sup>	4	143 lb.
HD01GB-24	24" PIN-ON - HD BUCKET	PO: 20-7/8"	24"	17-1/8"	24-9/16"	0.09 yd <sup>3</sup>	5	155 lb.
HT01GB2T-PO	MAIN PIN THUMB (QUICK COUPLER REQUIRED ) 2 TINES	19-5/16"	12-1/4"	5-7/16"	21-5/8"		2 tines	83 lb.

## Bucket-Thumb Compatibility

Part Number	Recommended Thumb (Between Teeth)
<b>Quick Hitch - Manual</b>	
HD01GB-12QH	STOPPING ON THE TEETH
HD01GB-16QH	HT01GB2T-QH
HD01GB-18QH	HT01GB2T-QH
HD01GB-20QH	HT01GB2T-QH
HD01GB-24QH	STOPPING ON THE TEETH
<b>Direct Pin-On or W/ Pin Grabber Quick Coupler</b>	
HD01GB-12	STOPPING ON THE TEETH
HD01GB-16	HT01GB2T-QH
HD01GB-18	HT01GB2T-QH
HD01GB-20	HT01GB2T-QH
HD01GB-24	STOPPING ON THE TEETH

# DX27Z-7

Part Number	Description	Tip Radius	Width	Height	Length	Capacity	Number of Teeth	Empty Weight
<b>Quick Hitch - Manual</b>								
QH03GB	QUICK HITCH QUICK COUPLER; MANUAL		9-1/4"	11-3/8"	16-9/16"			70 lb.
DC03GB-30QH	30" QUICK HITCH - DITCH CLEANING BUCKET	24-1/16"	31"	17-5/8"	23-5/8"	0.18 yd <sup>3</sup>		215 lb.
DC03GB-36QH	36" QUICK HITCH - DITCH CLEANING BUCKET	24-1/16"	37"	17-5/8"	23-5/8"	0.22 yd <sup>3</sup>		250 lb.
DC03GB-42QH	42" QUICK HITCH - DITCH CLEANING BUCKET	24-1/16"	43"	17-5/8"	23-5/8"	0.26 yd <sup>3</sup>		290 lb.
HD03GB-12QH	12" QUICK HITCH - HD BUCKET	27-3/16"	12"	18-3/8"	30-7/8"	0.06 yd <sup>3</sup>	3	125 lb.
HD03GB-16QH	16" QUICK HITCH - HD BUCKET	27-3/16"	16"	18-3/8"	30-7/8"	0.09 yd <sup>3</sup>	4	155 lb.
HD03GB-18QH	18" QUICK HITCH - HD BUCKET	27-3/16"	18"	18-3/8"	30-7/8"	0.10 yd <sup>3</sup>	4	165 lb.
HD03GB-24QH	24" QUICK HITCH - HD BUCKET	27-3/16"	24"	18-3/8"	30-7/8"	0.14 yd <sup>3</sup>	5	200 lb.
HT03GB2TP-QH	MAIN PIN THUMB (QH COUPLER REQUIRED ) 2 PROFILE TINES	28-1/2"	14-1/2"	11-1/2"	35-3/8"		2 profile tines	130 lb.
HT03GB2TW-QH	MAIN PIN THUMB (QH COUPLER REQUIRED ) 2 TINES	28-1/2"	14-1/2"	11-1/2"	35-3/8"		2 tines	135 lb.
HT03GB4T-QH	MAIN PIN THUMB (QH COUPLER REQUIRED ) 4 TINES	28-1/2"	16-3/8"	11-3/16"	35-3/8"		4 tines	150 lb.

<b>Direct Pin-On or W/ Pin Grabber Quick Coupler</b>								
DC02GB-30	30" PIN-ON - DITCH CLEANING BUCKET	PO: 24-1/2" QC: 29-1/2"	31"	22-3/4"	26-3/4"	0.18 yd <sup>3</sup>		235 lb.
DC02GB-36	36" PIN-ON - DITCH CLEANING BUCKET	PO: 24-1/2" QC: 29-1/2"	37"	22-3/4"	26-3/4"	0.23 yd <sup>3</sup>		265 lb.
DC02GB-42	42" PIN-ON - DITCH CLEANING BUCKET	PO: 24-1/2" QC: 29-1/2"	43"	22-3/4"	26-3/4"	0.26 yd <sup>3</sup>		300 lb.
DC02GB-48	48" PIN-ON - DITCH CLEANING BUCKET	PO: 24-1/2" QC: 29-1/2"	49"	22-3/4"	26-3/4"	0.31 yd <sup>3</sup>		330 lb.
HD02GB-12	12" PIN-ON - HD BUCKET	PO: 26" CQ: 30-1/2"	13"	22-3/8"	32"	0.06 yd <sup>3</sup>	3	125 lb.
HD02GB-16	16" PIN-ON - HD BUCKET	PO: 26" CQ: 30-1/2"	17"	22-3/8"	32"	0.09 yd <sup>3</sup>	4	145 lb.
HD02GB-18	18" PIN-ON - HD BUCKET	PO: 26" CQ: 30-1/2"	19"	22-3/8"	32"	0.10 yd <sup>3</sup>	4	155 lb.
HD02GB-20	20" PIN-ON - HD BUCKET	PO: 26" CQ: 30-1/2"	21"	22-3/8"	32"	0.11 yd <sup>3</sup>	4	165 lb.
HD02GB-24	24" PIN-ON - HD BUCKET	PO: 26" CQ: 30-1/2"	25"	22-3/8"	32"	0.14 yd <sup>3</sup>	5	185 lb.
HT02GB2TP-PO	MAIN PIN THUMB (NO COUPLER REQUIRED ) 2 PROFILE TINES	26-1/16"	14-7/8"	13-1/2"	33-1/4"		2 profile tines	130 lb.
HT02GB2TW-PO	MAIN PIN THUMB (NO COUPLER REQUIRED ) 2 TINES	26-1/16"	14-7/8"	13-1/2"	33-1/4"		2 tines	135 lb.
HT02GB4T-PO	MAIN PIN THUMB (NO COUPLER REQUIRED ) 4 TINES	26-1/16"	16-3/8"	13-1/2"	33-1/4"		4 tines	150 lb.
HT03GB2TP-QC	MAIN PIN THUMB (QUICK COUPLER REQUIRED ) 2 PROFILE TINES	30-3/4"	13-1/4"	12-7/8"	33-5/8"		2 profile tines	135 lb.
HT03GB2TW-QC	MAIN PIN THUMB (QUICK COUPLER REQUIRED ) 2 TINES	30-3/4"	13-1/4"	12-7/8"	33-5/8"		2 tines	140 lb.
HT03GB4T-QC	MAIN PIN THUMB (QUICK COUPLER REQUIRED ) 4 TINES	30-3/4"	16-3/8"	12-7/8"	33-5/8"		4 tines	155 lb.

## Bucket-Thumb Compatibility

Part Number	Recommended Thumb (Between Teeth)	Recommended 4 Tines Thumb (Between Teeth)
<b>Quick Hitch - Manual</b>		
HD03GB-12QH	HT03GB2TP-QH	HT03GB4T-QH
HD03GB-16QH	HT03GB2TW-QH	
HD03GB-18QH	HT03GB2TW-QH	
HD03GB-24QH	HT03GB2TP-QH	HT03GB4T-QH
<b>Direct Pin-On or W/ Pin Grabber Quick Coupler</b>		
HD02GB-12	HT02GB2TP-PO / HT03GB2TP-QC	HT02GB4T-PO / HT03GB4T-QC
HD02GB-16	HT02GB2TW-PO / HT03GB2TW-QC	
HD02GB-18	HT02GB2TW-PO / HT03GB2TW-QC	
HD02GB-20	HT02GB2TW-PO / HT03GB2TW-QC	
HD02GB-24	HT02GB2TP-PO / HT03GB2TP-QC	HT02GB4T-PO / HT03GB4T-QC

# DX35Z-7

Part Number	Description	Tip Radius	Width	Height	Length	Capacity	Number of Teeth	Empty Weight
<b>Quick Hitch - Manual</b>								
QH03GB	QUICK HITCH QUICK COUPLER; MANUAL		9-1/4"	11-3/8"	16-9/16"			70 lb.
DC03GB-30QH	30" QUICK HITCH - DITCH CLEANING BUCKET	24-1/16"	31"	17-5/8"	23-5/8"	0.18 yd <sup>3</sup>		215 lb.
DC03GB-36QH	36" QUICK HITCH - DITCH CLEANING BUCKET	24-1/16"	37"	17-5/8"	23-5/8"	0.22 yd <sup>3</sup>		250 lb.
DC03GB-42QH	42" QUICK HITCH - DITCH CLEANING BUCKET	24-1/16"	43"	17-5/8"	23-5/8"	0.26 yd <sup>3</sup>		290 lb.
HD03GB-12QH	12" QUICK HITCH HD BUCKET	27-3/16"	12"	18-3/8"	30-7/8"	0.06 yd <sup>3</sup>	3	125 lb.
HD03GB-16QH	16" QUICK HITCH HD BUCKET	27-3/16"	16"	18-3/8"	30-7/8"	0.09 yd <sup>3</sup>	4	155 lb.
HD03GB-18QH	18" QUICK HITCH HD BUCKET	27-3/16"	18"	18-3/8"	30-7/8"	0.10 yd <sup>3</sup>	4	165 lb.
HD03GB-24QH	24" QUICK HITCH HD BUCKET	27-3/16"	24"	18-3/8"	30-7/8"	0.14 yd <sup>3</sup>	5	200 lb.
HT03GB2TP-QH	MAIN PIN THUMB (QH COUPLER REQUIRED ) 2 PROFILE TINES	28-1/2"	14-1/2"	11-1/2"	35-3/8"		2 profile tines	130 lb.
HT03GB2TW-QH	MAIN PIN THUMB (QH COUPLER REQUIRED ) 2 TINES	28-1/2"	14-1/2"	11-1/2"	35-3/8"		2 tines	135 lb.
HT03GB4T-QH	MAIN PIN THUMB (QH COUPLER REQUIRED ) 4 TINES	28-1/2"	16-3/8"	11-3/16"	35-3/8"		4 tines	150 lb.

<b>Direct Pin-On or W/ Pin Grabber Quick Coupler</b>								
DC03GB-30	30" PIN-ON - DITCH CLEANING BUCKET	PO: 24-5/8" QC: 30"	31"	23	26-3/4"	0.18 yd <sup>3</sup>		235 lb.
DC03GB-36	36" PIN-ON - DITCH CLEANING BUCKET	PO: 24-5/8" QC: 30"	37"	23	26-3/4"	0.23 yd <sup>3</sup>		265 lb.
DC03GB-42	42" PIN-ON - DITCH CLEANING BUCKET	PO: 24-5/8" QC: 30"	43"	23	26-3/4"	0.26 yd <sup>3</sup>		300 lb.
DC03GB-48	48" PIN-ON - DITCH CLEANING BUCKET	PO: 24-5/8" QC: 30"	49"	23	26-3/4"	0.31 yd <sup>3</sup>		335 lb.
HD03GB-12	12" PIN-ON HD BUCKET	PO: 26" QC: 31"	13"	22-5/8"	32"	0.06 yd <sup>3</sup>	3	125 lb.
HD03GB-16	16" PIN-ON HD BUCKET	PO: 26" QC: 31"	17"	22-5/8"	32"	0.09 yd <sup>3</sup>	4	150 lb.
HD03GB-18	18" PIN-ON HD BUCKET	PO: 26" QC: 31"	19"	22-5/8"	32"	0.10 yd <sup>3</sup>	4	155 lb.
HD03GB-20	20" PIN-ON HD BUCKET	PO: 26" QC: 31"	21"	22-5/8"	32"	0.11 yd <sup>3</sup>	4	165 lb.
HD03GB-24	24" PIN-ON HD BUCKET	PO: 26" QC: 31"	25"	22-3/8"	32"	0.14 yd <sup>3</sup>	5	185 lb.
HT03GB2TP-PO	MAIN PIN THUMB (NO COUPLER REQUIRED ) 2 PROFILE TINES	26-1/16"	14-7/8"	13-1/2"	33-1/4"		2 profile tines	130 lb.
HT03GB2TW-PO	MAIN PIN THUMB (NO COUPLER REQUIRED ) 2 TINES	26-1/16"	14-7/8"	13-1/2"	33-1/4"		2 tines	135 lb.
HT03GB4T-PO	MAIN PIN THUMB (NO COUPLER REQUIRED ) 4 TINES	26-1/16"	16-3/8"	13-1/2"	33-1/4"		4 tines	150 lb.
HT03GB2TP-QC	MAIN PIN THUMB (QUICK COUPLER REQUIRED ) 2 PROFILE TINES	30-3/4"	13-1/4"	12-7/8"	33-5/8"		2 profile tines	135 lb.
HT03GB2TW-QC	MAIN PIN THUMB (QUICK COUPLER REQUIRED ) 2 TINES	30-3/4"	13-1/4"	12-7/8"	33-5/8"		2 tines	140 lb.
HT03GB4T-QC	MAIN PIN THUMB (QUICK COUPLER REQUIRED ) 4 TINES	30-3/4"	16-3/8"	12-7/8"	33-5/8"		4 tines	155 lb.

## Bucket-Thumb Compatibility

Part Number	Recommended Thumb (Between Teeth)	Recommended 4 Tines Thumb (Between Teeth)
<b>Quick Hitch - Manual</b>		
HD03GB-12QH	HT03GB2TP-QH	HT03GB4T-QH
HD03GB-16QH	HT03GB2TW-QH	
HD03GB-18QH	HT03GB2TW-QH	
HD03GB-24QH	HT03GB2TP-QH	HT03GB4T-QH
<b>Direct Pin-On or W/ Pin Grabber Quick Coupler</b>		
HD03GB-12	HT03GB2TP-PO / HT03GB2TP-QC	HT03GB4T-PO / HT03GB4T-QC
HD03GB-16	HT03GB2TW-PO / HT03GB2TW-QC	
HD03GB-18	HT03GB2TW-PO / HT03GB2TW-QC	
HD03GB-20	HT03GB2TW-PO / HT03GB2TW-QC	
HD03GB-24	HT03GB2TP-PO / HT03GB2TP-QC	HT03GB4T-PO / HT03GB4T-QC

# DX42-7

Part Number	Description	Tip Radius	Width	Height	Length	Capacity	Number of Teeth	Empty Weight
<b>Quick Hitch - Manual</b>								
QH04GB	QUICK HITCH QUICK COUPLER; MANUAL		9-1/4"	11-3/8"	16-9/16"			70 lb.
DC03GB-30QH	30" QUICK HITCH - DITCH CLEANING BUCKET	24-1/16"	31"	17-5/8"	23-5/8"	0.18 yd <sup>3</sup>		215 lb.
DC03GB-36QH	36" QUICK HITCH - DITCH CLEANING BUCKET	24-1/16"	37"	17-5/8"	23-5/8"	0.22 yd <sup>3</sup>		250 lb.
DC03GB-42QH	42" QUICK HITCH - DITCH CLEANING BUCKET	24-1/16"	43"	17-5/8"	23-5/8"	0.26 yd <sup>3</sup>		290 lb.
HD03GB-12QH	12" QUICK HITCH HD BUCKET	27-3/16"	12"	18-3/8"	30-7/8"	0.06 yd <sup>3</sup>	3	125 lb.
HD03GB-16QH	16" QUICK HITCH HD BUCKET	27-3/16"	16"	18-3/8"	30-7/8"	0.09 yd <sup>3</sup>	4	155 lb.
HD03GB-18QH	18" QUICK HITCH HD BUCKET	27-3/16"	18"	18-3/8"	30-7/8"	0.10 yd <sup>3</sup>	4	165 lb.
HD03GB-24QH	24" QUICK HITCH HD BUCKET	27-3/16"	24"	18-3/8"	30-7/8"	0.14 yd <sup>3</sup>	5	200 lb.
HT04GB2TP-QH	MAIN PIN THUMB (QH COUPLER REQUIRED ) 2 PROFILE TINES	28-1/2"	17-1/2"	14-1/4"	40-3/8"		2 profile tines	150 lb.
HT04GB2TW-QH	MAIN PIN THUMB (QH COUPLER REQUIRED ) 2 TINES	28-1/2"	17-1/2"	14-1/4"	40-3/8"		2 tines	155 lb.
HT04GB4T-QH	MAIN PIN THUMB (QH COUPLER REQUIRED ) 4 TINES	28-1/2"	19-3/4"	14-1/4"	40-3/8"		4 tines	185 lb.

<b>Direct Pin-On or W/ Pin Grabber Quick Coupler</b>								
DC04GB-30	30" PIN-ON - DITCH CLEANING BUCKET	PO: 24-5/8" QC: 31-5/8"	31	23	26-3/4"	0.18 yd <sup>3</sup>		250 lb.
DC04GB-36	36" PIN-ON - DITCH CLEANING BUCKET	PO: 24-5/8" QC: 31-5/8"	37	23	26-3/4"	0.23 yd <sup>3</sup>		285 lb.
DC04GB-42	42" PIN-ON - DITCH CLEANING BUCKET	PO: 24-5/8" QC: 31-5/8"	43	23	26-3/4"	0.26 yd <sup>3</sup>		315 lb.
DC04GB-48	48" PIN-ON - DITCH CLEANING BUCKET	PO: 24-5/8" QC: 31-5/8"	49	23	26-3/4"	0.31 yd <sup>3</sup>		350 lb.
HD04GB-12	12" PIN-ON HD BUCKET	PO: 26" QC: 32-3/8"	13"	22-5/8"	32"	0.06 yd <sup>3</sup>	3	145 lb.
HD04GB-16	16" PIN-ON HD BUCKET	PO: 26" QC: 32-3/8"	17"	22-5/8"	32"	0.09 yd <sup>3</sup>	4	165 lb.
HD04GB-18	18" PIN-ON HD BUCKET	PO: 26" QC: 32-3/8"	19"	22-5/8"	32"	0.10 yd <sup>3</sup>	4	175 lb.
HD04GB-20	20" PIN-ON HD BUCKET	PO: 26" QC: 32-3/8"	21"	22-5/8"	32"	0.11 yd <sup>3</sup>	4	185 lb.
HD04GB-24	24" PIN-ON HD BUCKET	PO: 26" QC: 32-3/8"	25"	22-5/8"	32"	0.14 yd <sup>3</sup>	5	205 lb.
HT04GB2TP-PO	MAIN PIN THUMB (NO COUPLER REQUIRED ) 2 PROFILE TINES	27"	16-1/2"	14-3/8"	40-1/4"		2 profile tines	145 lb.
HT04GB2TW-PO	MAIN PIN THUMB (NO COUPLER REQUIRED ) 2 TINES	27"	16-1/2"	14-3/8"	40-1/4"		2 tines	150 lb.
HT04GB4T-PO	MAIN PIN THUMB (NO COUPLER REQUIRED ) 4 TINES	27"	19-3/4"	14-3/8"	40-1/4"		4 tines	180 lb.
HT04GB2TP-QC	MAIN PIN THUMB (QUICK COUPLER REQUIRED ) 2 PROFILE TINES	32-1/4"	16-7/8"	14-1/8"	40-1/2"		2 profile tines	150 lb.
HT04GB2TW-QC	MAIN PIN THUMB (QUICK COUPLER REQUIRED ) 2 TINES	32-1/4"	16-7/8"	14-1/8"	40-1/2"		2 tines	155 lb.
HT04GB4T-QC	MAIN PIN THUMB (QUICK COUPLER REQUIRED ) 4 TINES	32-1/4"	19-3/4"	14-1/8"	40-1/2"		4 tines	190 lb.

## Bucket-Thumb Compatibility

Part Number	Recommended Thumb (Between Teeth)	Recommended 4 Tines Thumb (Between Teeth)
<b>Quick Hitch - Manual</b>		
HD03GB-12QH	HT04GB2TP-QH	HT04GB4T-QH
HD03GB-16QH	HT04GB2TW-QH	
HD03GB-18QH	HT04GB2TW-QH	
HD03GB-24QH	HT04GB2TP-QH	HT04GB4T-QH
<b>Direct Pin-On or W/ Pin Grabber Quick Coupler</b>		
HD04GB-12	HT04GB2TP-PO / HT04GB2TP-QC	HT04GB4T-PO / HT04GB4T-QC
HD04GB-16	HT04GB2TW-PO / HT04GB2TW-QC	
HD04GB-18	HT04GB2TW-PO / HT04GB2TW-QC	
HD04GB-20	HT04GB2TW-PO / HT04GB2TW-QC	
HD04GB-24	HT04GB2TP-PO / HT04GB2TP-QC	HT04GB4T-PO / HT04GB4T-QC



## DX50Z-7/DX55R-7/DX62R-7/DX63-7

Part Number	Description	Tip Radius	Width	Height	Length	Capacity	Number of Teeth	Empty Weight
<b>Quick Hitch - Manual</b>								
QH05GB	QUICK HITCH QUICK COUPLER, MANUAL		9-9/16"	11-3/4"	14-3/4"			70 lb.
DC05GB-36QH	36" QUICK HITCH - DITCH CLEANING BUCKET	28-7/8"	37"	21-1/16"	26-1/4"	0.29 yd <sup>3</sup>		290 lb.
DC05GB-42QH	42" QUICK HITCH - DITCH CLEANING BUCKET	28-7/8"	43"	21-1/16"	26-1/4"	0.35 yd <sup>3</sup>		325 lb.
DC05GB-48QH	48" QUICK HITCH - DITCH CLEANING BUCKET	28-7/8"	47"	21-1/16"	26-1/4"	0.40 yd <sup>3</sup>		365 lb.
HD05GB-12QH	12" QUICK HITCH HD BUCKET	32"	12"	21-3/16"	33-7/8"	0.08 yd <sup>3</sup>	3	120 lb.
HD05GB-18QH	18" QUICK HITCH HD BUCKET	32"	18"	21-3/16"	33-7/8"	0.13 yd <sup>3</sup>	4	155 lb.
HD05GB-24QH	24" QUICK HITCH HD BUCKET	32"	24"	21-3/16"	33-7/8"	0.18 yd <sup>3</sup>	5	185 lb.
HD05GB-30QH	30" QUICK HITCH HD BUCKET	32"	30"	21-3/16"	33-7/8"	0.24 yd <sup>3</sup>	5	220 lb.
HD05GB-36QH	36" QUICK HITCH HD BUCKET	32"	36"	21-3/16"	33-7/8"	0.30 yd <sup>3</sup>	6	250 lb.
HT05GB2TP-QH	MAIN PIN THUMB (QH COUPLER REQUIRED ) 2 PROFILE TINES	32-7/8"	17-1/2"	14-1/4"	40-3/8"		2 profile tines	180 lb.
HT05GB2TW-QH	MAIN PIN THUMB (QH COUPLER REQUIRED ) 2 TINES	32-7/8"	17-1/2"	14-1/4"	40-3/8"		2 tines	190 lb.
HT05GB4T-QH	MAIN PIN THUMB (QH COUPLER REQUIRED ) 4 TINES	32-7/8"	19-3/4"	14-1/4"	40-3/8"		4 tines	215 lb.
<b>Direct Pin-On or W/ Pin Grabber Quick Coupler</b>								
DC05GB-36	36" PIN-ON - DITCH CLEANING BUCKET	PO: 28-1/2" QC: 36"	37"	27"	30"	0.30 yd <sup>3</sup>		340 lb.
DC05GB-42	42" PIN-ON - DITCH CLEANING BUCKET	PO: 28-1/2" QC: 36"	43"	27"	30"	0.36 yd <sup>3</sup>		380 lb.
DC05GB-48	48" PIN-ON - DITCH CLEANING BUCKET	PO: 28-1/2" QC: 36"	49"	27"	30"	0.42 yd <sup>3</sup>		420 lb.
DC05GB-54	54" PIN-ON - DITCH CLEANING BUCKET	PO: 28-1/2" QC: 36"	55"	27"	30"	0.47 yd <sup>3</sup>		460 lb.
DC05GB-60	60" PIN-ON - DITCH CLEANING BUCKET	PO: 28-1/2" QC: 36"	61"	27"	30"	0.53 yd <sup>3</sup>		500 lb.
HD05GB-12	12" PIN-ON HD BUCKET	PO: 29-1/2" QC: 36-5/8"	12-3/8"	26"	37-1/4"	0.10 yd <sup>3</sup>	3	180 lb.
HD05GB-16	16" PIN-ON HD BUCKET	PO: 29-1/2" QC: 36-5/8"	17"	26"	37-1/4"	0.12 yd <sup>3</sup>	4	205 lb.
HD05GB-18	18" PIN-ON HD BUCKET	PO: 29-1/2" QC: 36-5/8"	19"	26"	37-1/4"	0.14 yd <sup>3</sup>	4	215 lb.
HD05GB-24	24" PIN-ON HD BUCKET	PO: 29-1/2" QC: 36-5/8"	25"	26"	37-1/4"	0.20 yd <sup>3</sup>	5	250 lb.
HD05GB-30	30" PIN-ON HD BUCKET	PO: 29-1/2" QC: 36-5/8"	31"	26"	37-1/4"	0.24 yd <sup>3</sup>	5	285 lb.
HD05GB-36	36" PIN-ON HD BUCKET	PO: 29-1/2" QC: 36-5/8"	37"	26"	37-1/4"	0.32 yd <sup>3</sup>	6	320 lb.
HT05GB2TP-PO	MAIN PIN THUMB (NO COUPLER REQUIRED ) 2 PROFILE TINES	29-7/8"	16-1/2"	14-3/8"	40-1/4"		2 profile tines	165 lb.
HT05GB2TW-PO	MAIN PIN THUMB (NO COUPLER REQUIRED ) 2 TINES	29-7/8"	16-1/2"	14-3/8"	40-1/4"		2 tines	170 lb.
HT05GB4T-PO	MAIN PIN THUMB (NO COUPLER REQUIRED ) 4 TINES	29-7/8"	19-3/4"	14-3/8"	40-1/4"		4 tines	195 lb.
HT05GB2TP-QC	MAIN PIN THUMB (QUICK COUPLER REQUIRED ) 2 PROFILE TINES	35-3/4"	16-7/8"	14-1/8"	40-1/2"		2 profile tines	170 lb.
HT05GB2TW-QC	MAIN PIN THUMB (QUICK COUPLER REQUIRED ) 2 TINES	35-3/4"	16-7/8"	14-1/8"	40-1/2"		2 tines	180 lb.
HT05GB4T-QC	MAIN PIN THUMB (QUICK COUPLER REQUIRED ) 4 TINES	35-3/4"	19-3/4"	14-1/8"	40-1/2"		4 tines	205 lb.

### Bucket-Thumb Compatibility

Part Number      Recommended Thumb (Between Teeth)      Recommended 4 Tines Thumb (Between Teeth)

<b>Quick Hitch - Manual</b>		
HD05GB-12QH	HT05GB2TP-QH	HT05GB4T-QH
HD05GB-18QH	HT05GB2TW-QH	
HD05GB-24QH	HT05GB2TP-QH	HT05GB4T-QH
HD05GB-30QH	HT05GB2TP-QH	HT05GB4T-QH
HD05GB-36QH	HT05GB2TW-QH	

<b>Direct Pin-On or W/ Pin Grabber Quick Coupler</b>		
HD05GB-12	HT05GB2TP-PO / HT05GB2TP-QC	HT05GB4T-PO / HT05GB4T-QC
HD05GB-16	HT05GB2TW-PO / HT05GB2TW-QC	
HD05GB-18	HT05GB2TW-PO / HT05GB2TW-QC	
HD05GB-24	HT05GB2TP-PO / HT05GB2TP-QC	HT05GB4T-PO / HT05GB4T-QC
HD05GB-30	HT05GB2TP-PO / HT05GB2TP-QC	HT05GB4T-PO / HT05GB4T-QC
HD05GB-36	HT05GB2TW-PO / HT05GB2TW-QC	

# DX89R-7

Part Number	Description	Tip Radius	Width	Height	Length	Capacity	Number of Teeth	Empty Weight
<b>Quick Hitch - Manual</b>								
QH08GB	QUICK HITCH QUICK COUPLER, MANUAL		12-3/8"	17-7/8"	21-3/8"			150 lb.
DC08GB-42QH	42" QUICK HITCH - DITCH CLEANING BUCKET	38-1/2"	42"	26-3/16"	32-11/16"	0.53 yd <sup>3</sup>		540 lb.
DC08GB-48QH	48" QUICK HITCH - DITCH CLEANING BUCKET	38-1/2"	48"	26-3/16"	32-11/16"	0.62 yd <sup>3</sup>		605 lb.
DC08GB-54QH	54" QUICK HITCH - DITCH CLEANING BUCKET	38-1/2"	54"	26-3/16"	32-11/16"	0.70 yd <sup>3</sup>		640 lb.
DC08GB-60QH	60" QUICK HITCH - DITCH CLEANING BUCKET	38-1/2"	60"	26-3/16"	32-11/16"	0.80 yd <sup>3</sup>		700 lb.
HD08GB-12QH	12" QUICK HITCH HD BUCKET	43"	12"	28-5/16"	43-3/8"	0.15 yd <sup>3</sup>	3	245 lb.
HD08GB-18QH	18" QUICK HITCH HD BUCKET	43"	18"	28-5/16"	43-3/8"	0.21 yd <sup>3</sup>	4	290 lb.
HD08GB-24QH	24" QUICK HITCH HD BUCKET	43"	24"	28-5/16"	43-3/8"	0.32 yd <sup>3</sup>	4	340 lb.
HD08GB-30QH	30" QUICK HITCH HD BUCKET	43"	30"	28-5/16"	43-3/8"	0.42 yd <sup>3</sup>	5	400 lb.
HD08GB-36QH	36" QUICK HITCH HD BUCKET	43"	36"	28-5/16"	43-3/8"	0.52 yd <sup>3</sup>	6	460 lb.
HT09GB2TP-QH	MAIN PIN THUMB (QH COUPLER REQUIRED ) 2 PROFILE TINES	43-7/8"	18-1/2"	17-3/4"	53-7/8"		2 profile tines	270 lb.
HT09GB2TW-QH	MAIN PIN THUMB (QH COUPLER REQUIRED ) 2 TINES	43-7/8"	18-1/2"	17-3/4"	53-7/8"		2 tines	290 lb.
HT09GB4T-QH	MAIN PIN THUMB (QH COUPLER REQUIRED ) 4 TINES	43-7/8"	22-1/2"	17-3/4"	53-7/8"		4 tines	330 lb.
<b>Direct Pin-On or W/ Pin Grabber Quick Coupler</b>								
DC08GB-42	42" PIN-ON - DITCH CLEANING BUCKET	PO: 35-1/2" QC: 42"	43"	33-1/4"	39-1/2"	0.59 yd <sup>3</sup>		560 lb.
DC08GB-48	48" PIN-ON - DITCH CLEANING BUCKET	PO: 35-1/2" QC: 42"	49"	33-1/4"	39-1/2"	0.70 yd <sup>3</sup>		610 lb.
DC08GB-54	54" PIN-ON - DITCH CLEANING BUCKET	PO: 35-1/2" QC: 42"	55"	33-1/4"	39-1/2"	0.78 yd <sup>3</sup>		665 lb.
DC08GB-60	60" PIN-ON - DITCH CLEANING BUCKET	PO: 35-1/2" QC: 42"	61"	33-1/4"	39-1/2"	0.88 yd <sup>3</sup>		700 lb.
HD08GB-14	14" PIN-ON HD BUCKET	PO: 38-1/4" QC: 44"	15-1/2"	33-1/2"	44"	0.17 yd <sup>3</sup>	3	390 lb.
HD08GB-18	18" PIN-ON HD BUCKET	PO: 38-1/4" QC: 44"	19"	33-1/2"	44"	0.23 yd <sup>3</sup>	4	440 lb.
HD08GB-24	24" PIN-ON HD BUCKET	PO: 38-1/4" QC: 44"	25"	33-1/2"	44"	0.33 yd <sup>3</sup>	4	490 lb.
HD08GB-30	30" PIN-ON HD BUCKET	PO: 38-1/4" QC: 44"	31"	33-1/2"	44"	0.45 yd <sup>3</sup>	5	555 lb.
HD08GB-36	36" PIN-ON HD BUCKET	PO: 38-1/4" QC: 44"	37"	33-1/2"	44"	0.54 yd <sup>3</sup>	6	620 lb.
HT09GB2TP-PO	MAIN PIN THUMB (NO COUPLER REQUIRED ) 2 PROFILE TINES	38-3/4"	18-3/4"	21-1/2"	48-7/8"		2 profile tines	255 lb.
HT09GB2TW-PO	MAIN PIN THUMB (NO COUPLER REQUIRED ) 2 TINES	38-3/4"	18-3/4"	21-1/2"	48-7/8"		2 tines	270 lb.
HT09GB4T-PO	MAIN PIN THUMB (NO COUPLER REQUIRED ) 4 TINES	38-3/4"	26-7/8"	21-1/2"	48-7/8"		4 tines	310 lb.
HT09GB2TP-QC	MAIN PIN THUMB (QUICK COUPLER REQUIRED ) 2 PROFILE TINES	43-3/4"	19-3/4"	21"	49"		2 profile tines	270 lb.
HT09GB2TW-QC	MAIN PIN THUMB (QUICK COUPLER REQUIRED ) 2 TINES	43-3/4"	19-3/4"	21"	49"		2 tines	290 lb.
HT09GB4T-QC	MAIN PIN THUMB (QUICK COUPLER REQUIRED ) 4 TINES	43-3/4"	22-1/2"	21"	49"		4 tines	330 lb.

## Bucket-Thumb Compatibility

Part Number	Recommended Thumb (Between Teeth)	Recommended 4 Tines Thumb (Between Teeth)
<b>Quick Hitch - Manual</b>		
HD08GB-12QH	HT09GB2TP-QH STOP ON THE TEETH	HT09GB4T-QH STOP ON THE TEETH
HD08GB-18QH	ALL MODELS ARE STOPPING ON THE TEETH	
HD08GB-24QH	HT09GB2TW-QH	
HD08GB-30QH	HT09GB2TP-QH	HT09GB4T-QH
HD08GB-36QH	HT09GB2TW-QH	
<b>Direct Pin-On or W/ Pin Grabber Quick Coupler</b>		
HD08GB-14	HT09GB2TP-PO / HT09GB2TP-QC	HT09GB4T-PO / HT09GB4T-QC
HD08GB-18	ALL MODELS ARE STOPPING ON THE TEETH	
HD08GB-24	HT09GB2TW-PO / HT09GB2TW-QC	
HD08GB-30	HT09GB2TP-PO / HT09GB2TP-QC	HT09GB4T-PO / HT09GB4T-QC
HD08GB-36	HT09GB2TW-PO / HT09GB2TW-QC	

# DX100W-7

Part Number	Description	Tip Radius	Width	Height	Length	Capacity	Number of Teeth	Empty Weight
<b>Quick Hitch - Manual</b>								
QH08GB	QUICK HITCH QUICK COUPLER, MANUAL		12-3/8"	17-7/8"	21-3/8"			150 lb.
DC08GB-42QH	42" QUICK HITCH - DITCH CLEANING BUCKET	38-1/2"	42"	26-3/16"	32-11/16"	0.53 yd <sup>3</sup>		540 lb.
DC08GB-48QH	48" QUICK HITCH - DITCH CLEANING BUCKET	38-1/2"	48"	26-3/16"	32-11/16"	0.62 yd <sup>3</sup>		605 lb.
DC08GB-54QH	54" QUICK HITCH - DITCH CLEANING BUCKET	38-1/2"	54"	26-3/16"	32-11/16"	0.70 yd <sup>3</sup>		640 lb.
DC08GB-60QH	60" QUICK HITCH - DITCH CLEANING BUCKET	38-1/2"	60"	26-3/16"	32-11/16"	0.80 yd <sup>3</sup>		700 lb.
HD08GB-12QH	12" QUICK HITCH HD BUCKET	43"	12"	28-5/16"	43-3/8"	0.15 yd <sup>3</sup>	3	245 lb.
HD08GB-18QH	18" QUICK HITCH HD BUCKET	43"	18"	28-5/16"	43-3/8"	0.21 yd <sup>3</sup>	4	290 lb.
HD08GB-24QH	24" QUICK HITCH HD BUCKET	43"	24"	28-5/16"	43-3/8"	0.32 yd <sup>3</sup>	4	340 lb.
HD08GB-30QH	30" QUICK HITCH HD BUCKET	43"	30"	28-5/16"	43-3/8"	0.42 yd <sup>3</sup>	5	400 lb.
HD08GB-36QH	36" QUICK HITCH HD BUCKET	43"	36"	28-5/16"	43-3/8"	0.52 yd <sup>3</sup>	6	460 lb.
<b>Direct Pin-On or W/ Pin Grabber Quick Coupler</b>								
DC08GB-42	42" PIN-ON - DITCH CLEANING BUCKET	PO: 35-1/2" QC: 42"	43"	33-1/4"	39-1/2"	0.59 yd <sup>3</sup>		560 lb.
DC08GB-48	48" PIN-ON - DITCH CLEANING BUCKET	PO: 35-1/2" QC: 42"	49"	33-1/4"	39-1/2"	0.70 yd <sup>3</sup>		610 lb.
DC08GB-54	54" PIN-ON - DITCH CLEANING BUCKET	PO: 35-1/2" QC: 42"	55"	33-1/4"	39-1/2"	0.78 yd <sup>3</sup>		665 lb.
DC08GB-60	60" PIN-ON - DITCH CLEANING BUCKET	PO: 35-1/2" QC: 42"	61"	33-1/4"	39-1/2"	0.88 yd <sup>3</sup>		700 lb.
HD08GB-14	14" PIN-ON HD BUCKET	PO: 38-1/4" QC: 44"	15-1/2"	33-1/2"	44"	0.17 yd <sup>3</sup>	3	390 lb.
HD08GB-18	18" PIN-ON HD BUCKET	PO: 38-1/4" QC: 44"	19"	33-1/2"	44"	0.23 yd <sup>3</sup>	4	440 lb.
HD08GB-24	24" PIN-ON HD BUCKET	PO: 38-1/4" QC: 44"	25"	33-1/2"	44"	0.33 yd <sup>3</sup>	4	490 lb.
HD08GB-30	30" PIN-ON HD BUCKET	PO: 38-1/4" QC: 44"	31"	33-1/2"	44"	0.45 yd <sup>3</sup>	5	555 lb.
HD08GB-36	36" PIN-ON HD BUCKET	PO: 38-1/4" QC: 44"	37"	33-1/2"	44"	0.54 yd <sup>3</sup>	6	620 lb.

Certain specification(s) are based on engineering calculations and are not actual measurements. Specification(s) are provided for comparison purposes only and are subject to change without notice. Specification(s) for your individual DEVELON equipment will vary based on normal variations in design, manufacturing, operating conditions, and other factors. Pictures of DEVELON units may show other than standard equipment.

# Powered by Innovation



Scan to  
learn more.

[na.develon-ce.com/attachments](https://na.develon-ce.com/attachments)

Compact Equipment Attachment Brochure  
Printed in the U.S.A.  
24913\_001\_D062824

# DEVELON

A brand of HD Hyundai Infracore.

©2024 HD Hyundai Infracore. All rights reserved.